



Design for Cold storage



UGR<16

IP66

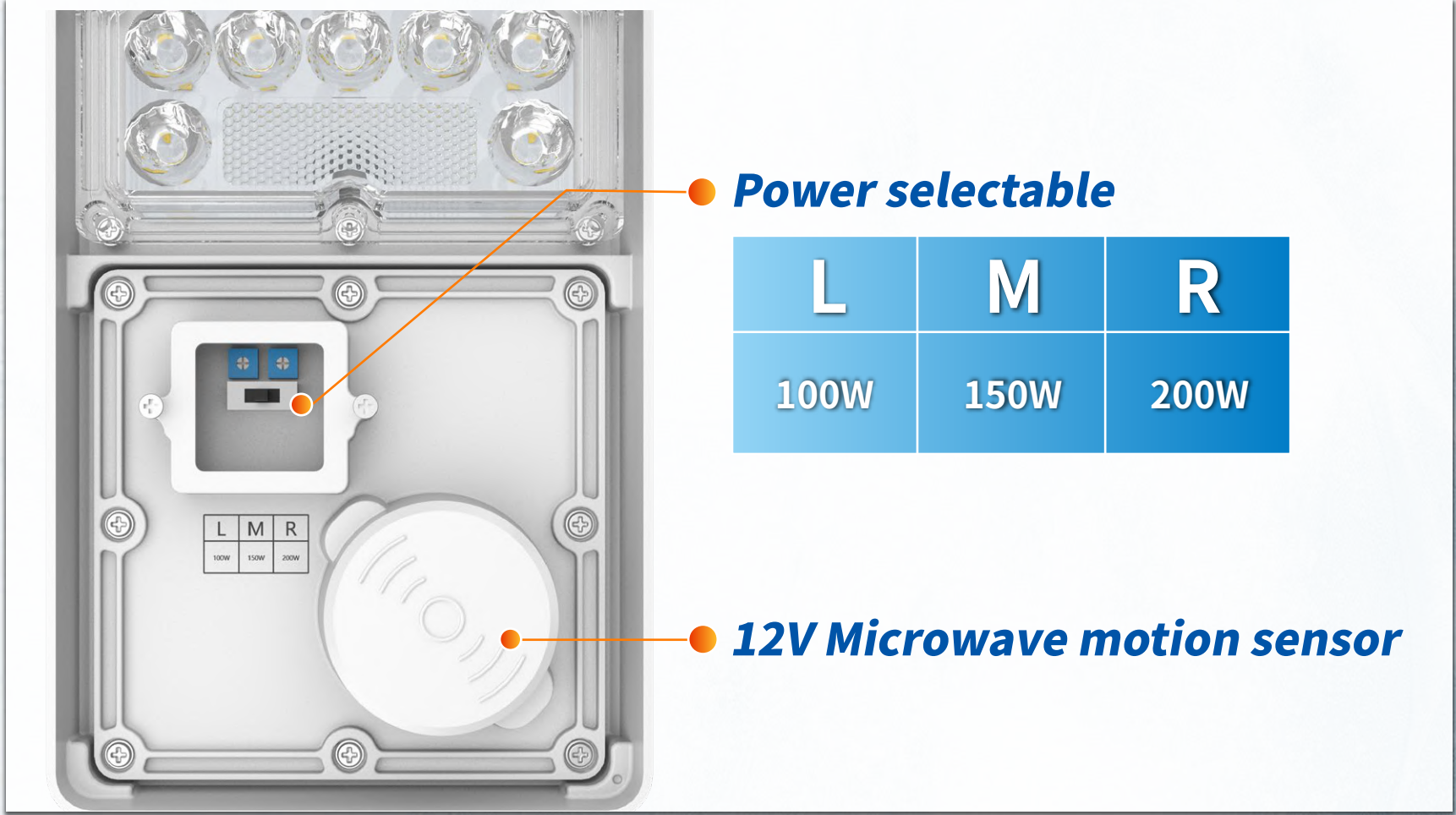
IK10

160lm/W

FEATURES

- The unique rectangle light distribution provides precise and efficient lighting for high shelves warehouse
- UGR<16, more comfortable visual effects
- Up to 160lm/W, saving more energy
- Special power supply for cold storage with 50,000 hours lifetime @ -50 °C
- IP66 grade protection, more reliable for cold storage
- 6KV/10KV surge protection, no fear for high surge voltage generated by large compressor refrigeration
- Sensor optional, more intelligent and more energy saving

DETAILS



CERTIFICATIONS

CE RoHS

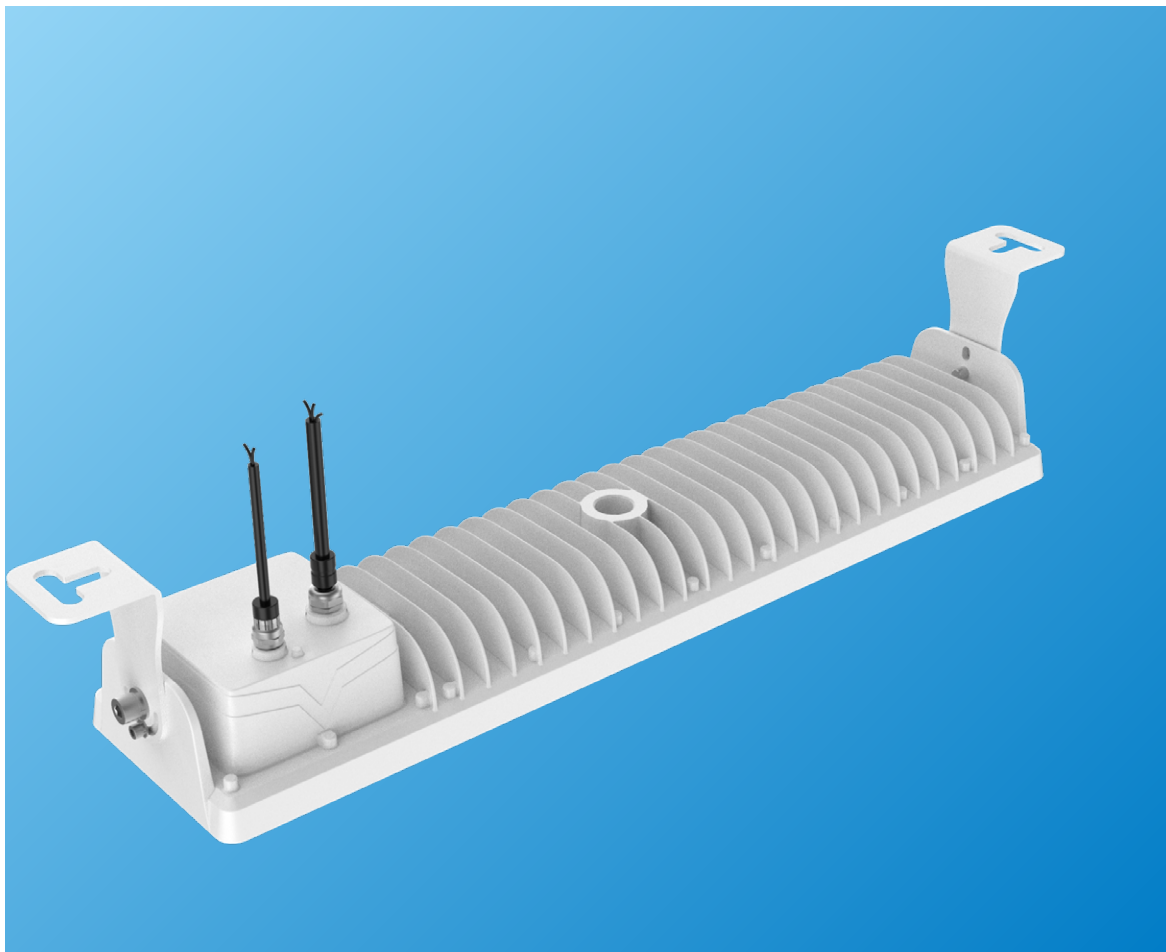
SPECIFICATIONS

CS317 Cold-storage Highbay

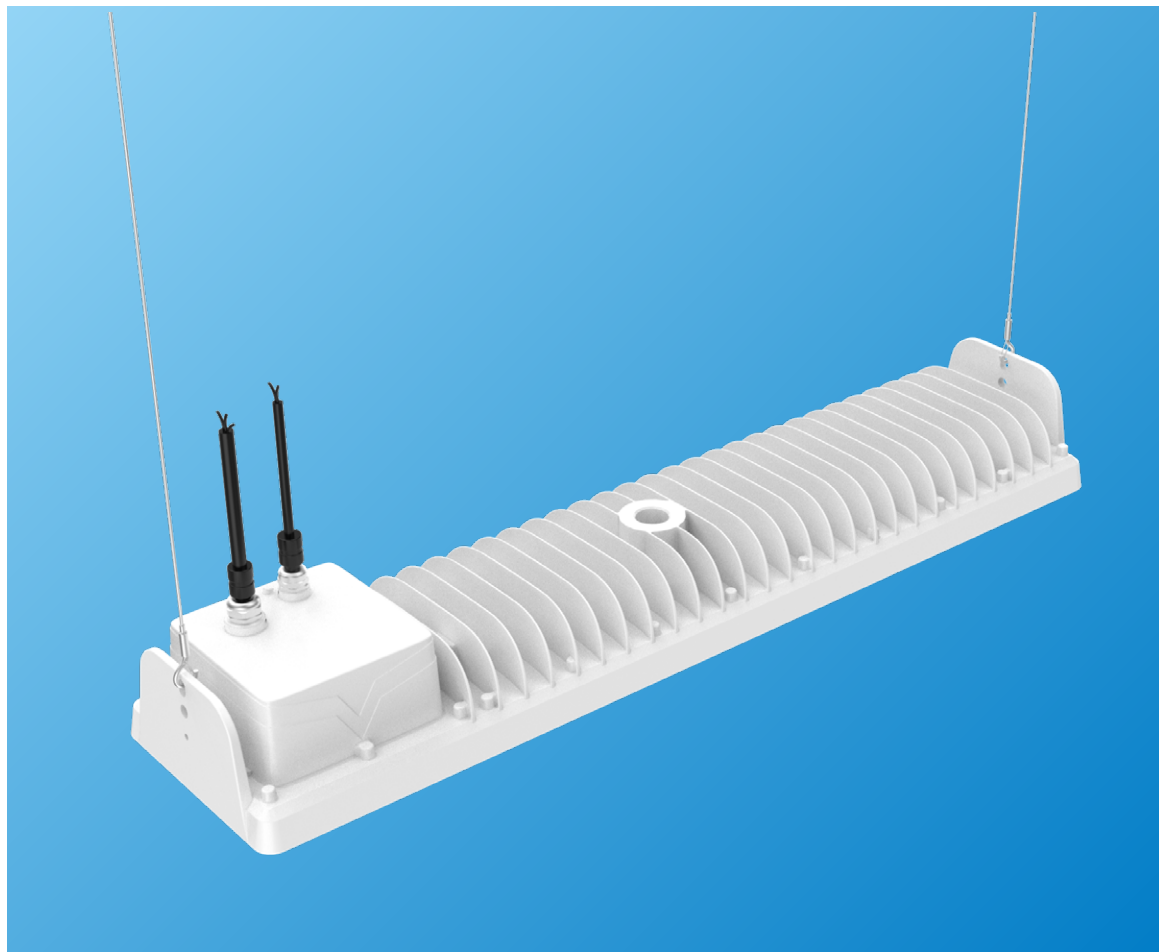
Model No.	CS317-200W	
Power Selectable	200W-150W-100W	
Product Dimension	565*135*79MM	
Efficiency	160±10lm/W	
Luminous Flux	200W(32000±2000lm)-150W(24000±1500lm)-100W(16000±1000lm)	
Driver Brand	TOMCARLINE	
CCT	3000K;4000K;5000K;6500K	
UGR	<16	
Ingress Protection	IP66	
Impact Protection	IK10	
Color Rendering Index	Ra>80	
Beam Angle	20° / 4 0°/ 60°/ 90°/ 30*70° / 60*130°	
Input Voltage	AC120-277V	
Power Factor	0.95	
Frequency	50/60HZ	
Driver Type	Constant Current	
Luminaire Net Weight	3KG	
Packing Information	1PCS / CTN	
Export Carton Size	64*20*15.5CM	
Gross Weight	3.6KG	
Material	Housing	Aluminum Alloy
	Optics	PC
Finish	Powder Coating	
Fixture Color	White	
Mounting Option	Suspending ropes installation Surface mounting brackets Pendant G1/2"NPT installation Pendant G3/4"NPT installation	
Storage temperature range	-40 °C - +70 °C	
Storage humidity range	85% max.	
Operating temperature range	-50~+50 °C	
Operating humidity range	85% max.	
Life Time	50000 hours	
Warranty	5 Years	
Dimmable	0-10V/1-10V dimmable	
Intelligent Control	12V Microwave motion sensor	



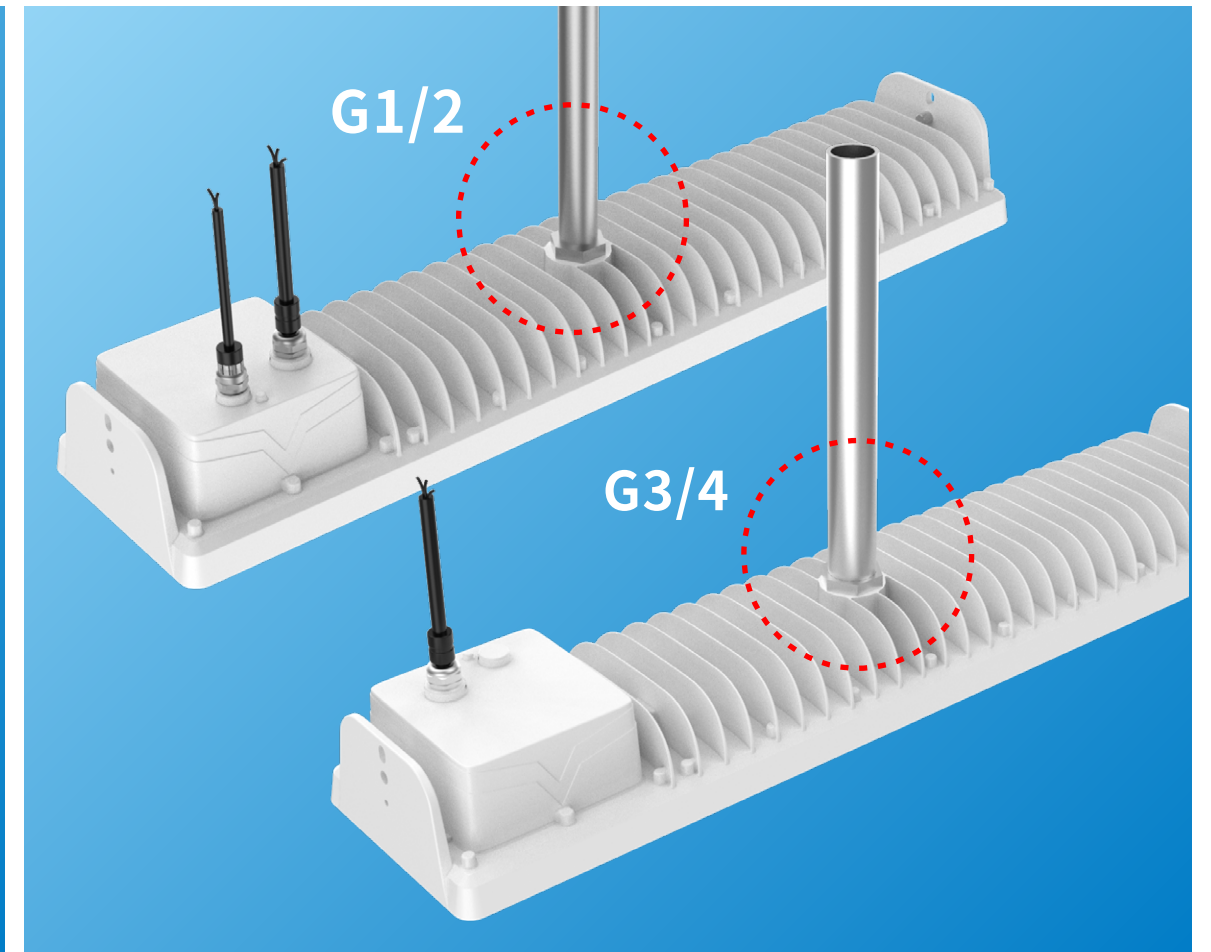
INSTALLATION



Surface mounting brackets
(Standard)

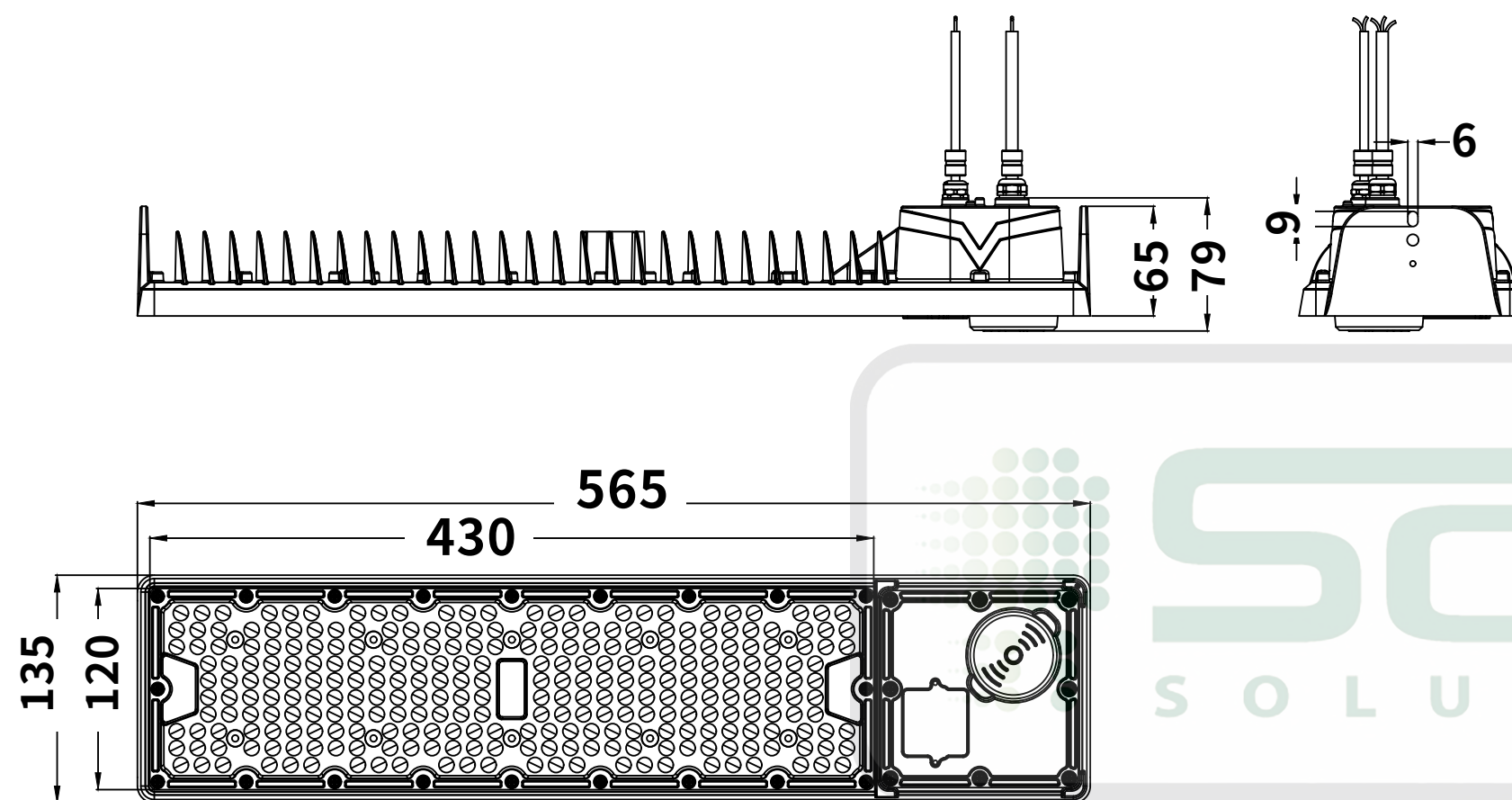


Suspending ropes installation
(Optional)

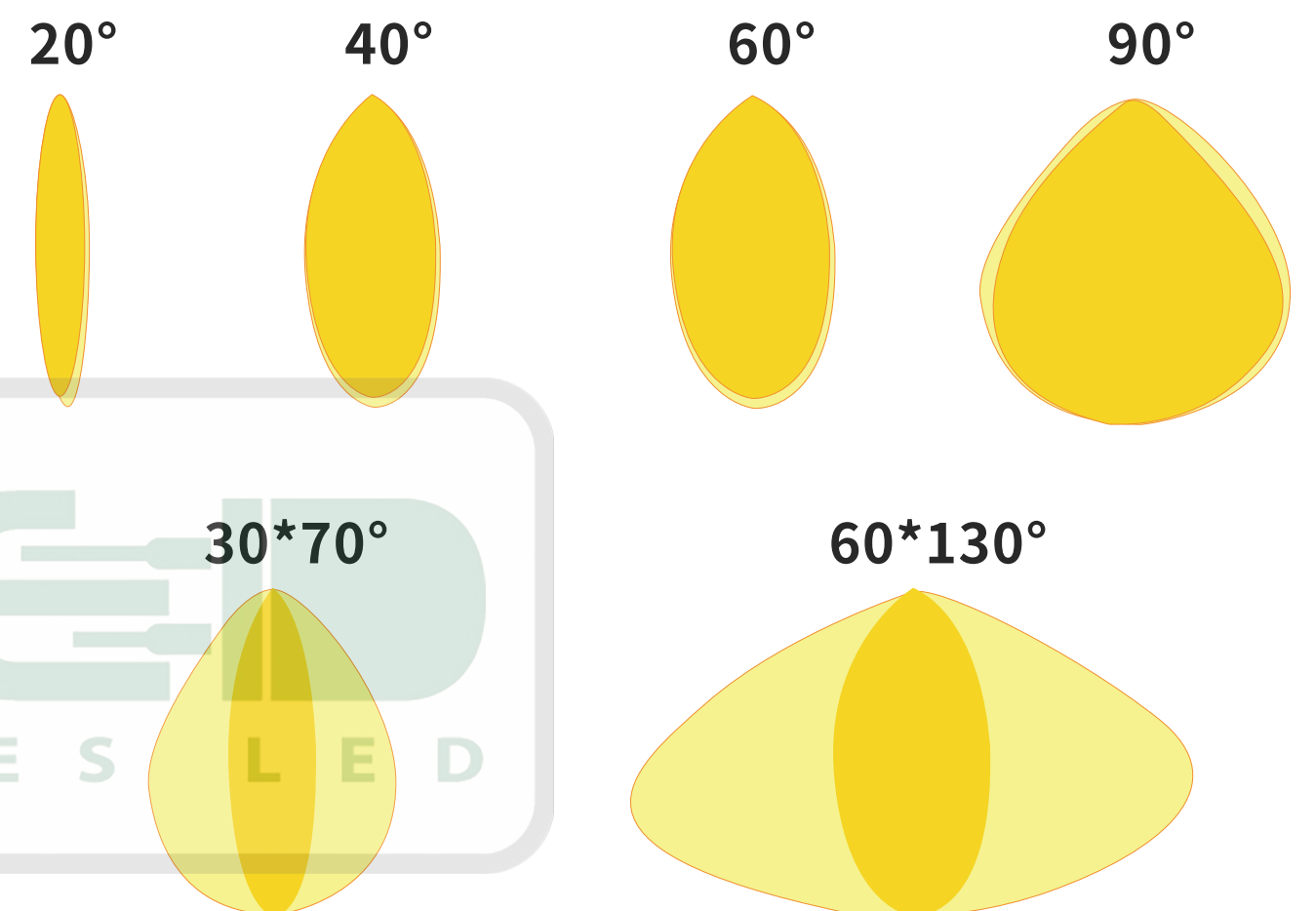


Pendant G1/2"NPT installation
Pendant G3/4"NPT installation
(Optional) (Pole is not provided)

DIMENSIONS



LIGHT DISTRIBUTION CURVE



APPLICATIONS (Suitable for -50°C environment)

